

## **Anti-Trop-2 x CD3**

Bi-Specific Antibody against tumor-specific  
Trop-2 Cancer Cells

# Trop-2 x CD3 Bi-Specific Antibody for Head & Neck and Others Cancer

## Target Mechanism

Select killing cancer cells that up-regulate Trop-2 expression while improving safety margin in reducing cytokine release syndrome (CRS)

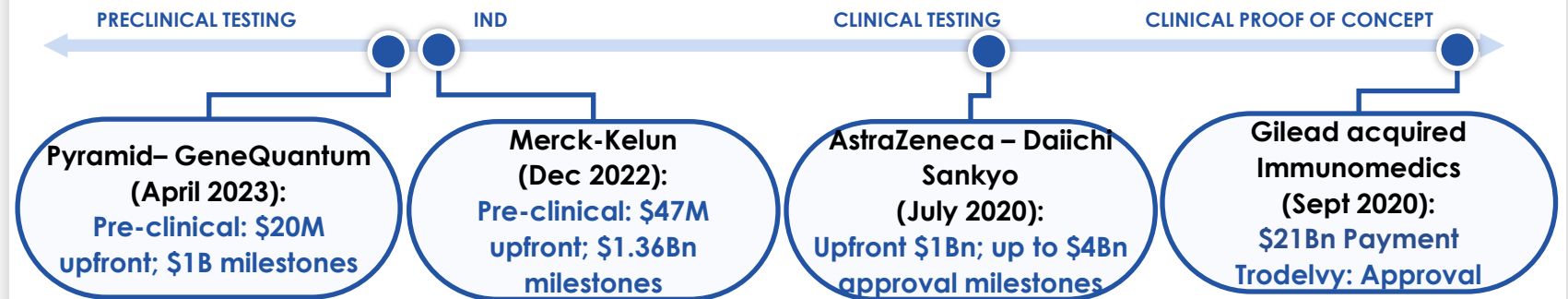
## Potential Indications

- Head & neck cancer
- Lung cancer
- Ovarian cancer
- Breast cancer
- Pancreatic cancer

## Differentiation / Opportunity

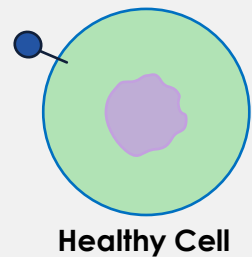
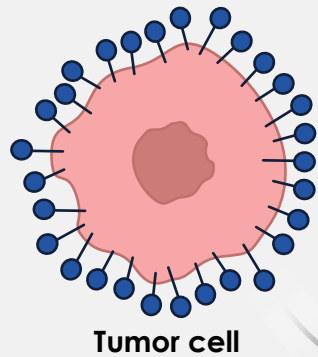
- Novel Trop-2 epitope with extreme high affinity to target
- Trop-2 binder with mouse/cyno/human cross reactive enables early safety profile optimization
- Optimal iBio CD3 engager with low CRS and cyno/human cross reactive

## Recent Trop-2 ADC Transactions & Milestones

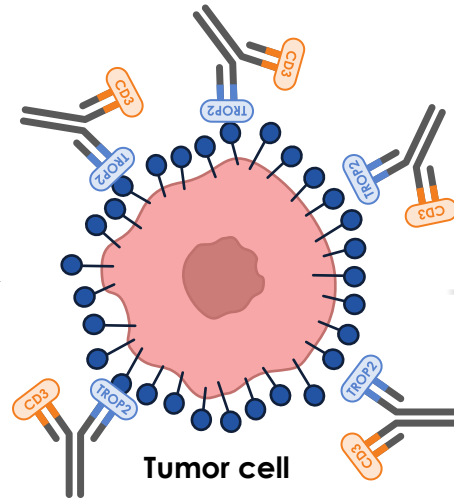


# Trop-2 x CD3 Bi-Specific Antibody Selective Target Overexpress Trop-2 Cancer Cells

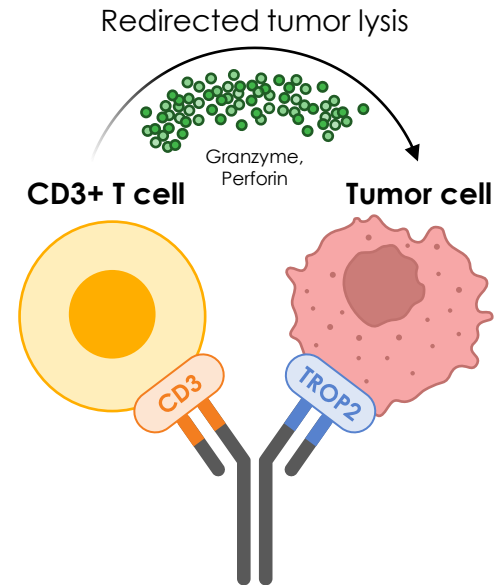
Tumor cells show significantly increased Trop-2 expression



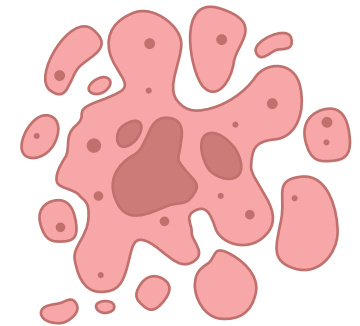
Trop-2 x CD3 **binds** to tumor cells



Trop-2 x CD3 **recruits** T cells to kill tumor cells

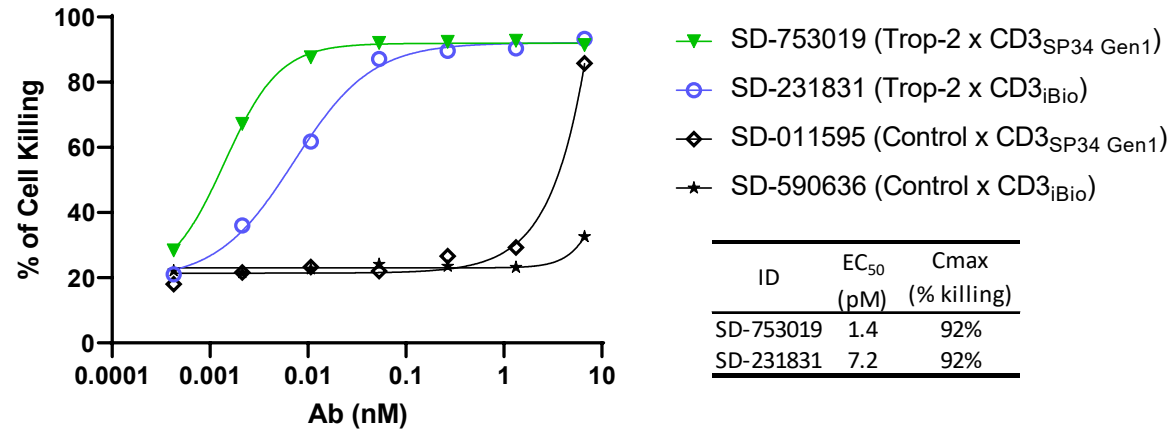


**Tumor cell death** with high Trop-2 expression

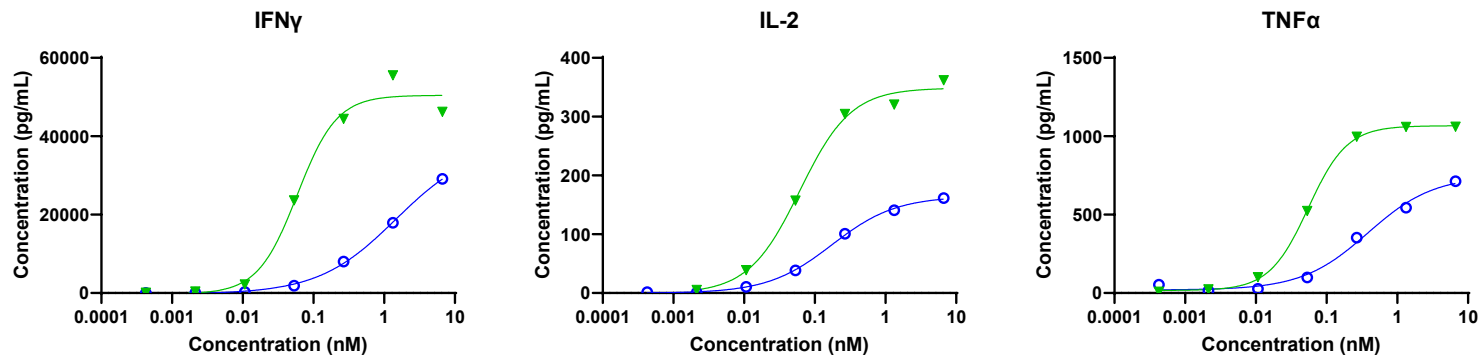


# iBio's Trop-2 x CD3 Bi-Specific Antibody Potently Kills Tumor Cells with Low Cytokine Release

## Potent Cancer Cell Killing



## Minimal Cytokine Release



# A Single Dose of iBio's Bispecific Trop-2 x CD3 Antibody Induces Tumor Regression in a Humanized Mouse Cancer Model

